

INSTALLATION OF R125 SPIRAL RIGHT HAND ON A ½" STRAIGHT SHAFT

Product No. R125

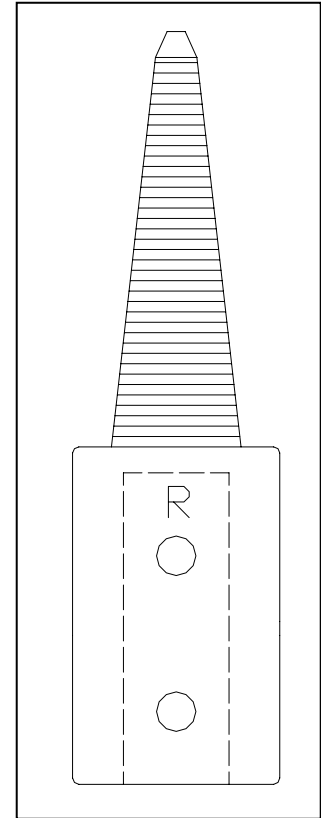
1.0 OVERVIEW

The **R125 Spiral Right Hand** is to be installed on a ½" **Straight Shaft Right Hand Side Only**.

The **R125 Spiral Right Hand** comes with (2) 10-32 X 1/4" Set Screws and (1) 3/32" Hex Wrench.

2.0 INSTALLATION

- 2.1 Unplug the power cord.
 - 2.2 Remove any object from the **Right Hand** shaft.
 - 2.3 Make sure the shaft is free from damage or rust.
 - 2.4 Make sure the **R125 Spiral Right Hand** slides freely on to the shaft. Do not force it on. If it will not go on there is damage, such as a burr or rust on the shaft. Use a file and/or emery paper (sand paper) to clean the shaft.
-
- 2.5 If you have a shaft as in **Figure 1**, you **Must File Two (2) Flat Spots** for the **Set Screws** to **Set On** or the **Set Screws Will Damage the Shaft** and you will not be able to remove the **R125 Spiral Right Hand**. Slide the **R125 Spiral Right Hand** onto the shaft and gently tighten the **Set Screws** to make marks on the shaft. File flats on the shaft where the **Set Screws** made the marks.
-
- 3.0 If you have a shaft as in **Figure 2**, slide the **R125 Spiral Right Hand** onto the shaft and tighten the two (2) **Set Screws** onto the flat of the shaft.



**R125 Spiral
Right Hand**

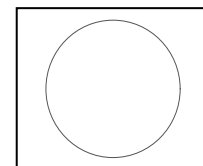


Figure 1

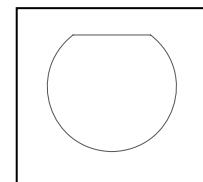


Figure 2