

## INSTALLATION OF LIGHT SHIELD

Product No. L013  
 LIGHT SHIELD - QUICK CHUCK RH

### 1.0 OVERVIEW

This bulletin covers the installation of a Light Shield for a right hand Quick Chuck illustrated in Figure 1.

### 2.0 INSTALL BRACKET

2.1 **IMPORTANT:** Move the Quick Chuck handle to the 6:00 open collet position before removing screws.

2.1 Remove three mounting screws that hold the Quick Chuck illustrated in Figure 2. Leave the Quick Chuck attached with the one screw.

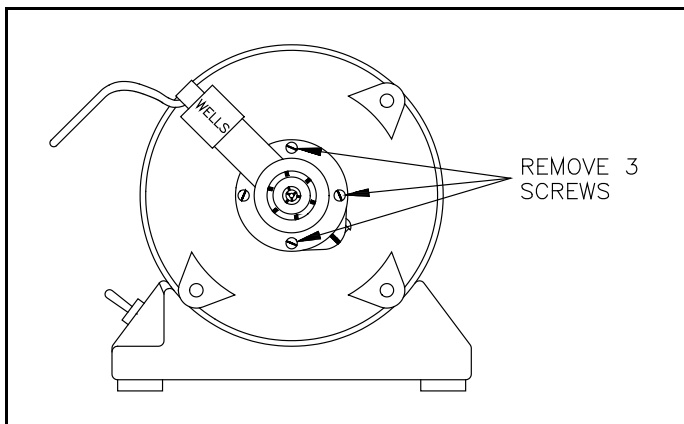


Figure 2.

2.2 Fasten the bracket with Light Shield attached as shown in Figure 3. using the three longer screws that came with the Light Shield.

### 3.0 WIRING

3.1 Connectors for hardwiring the Light Shield power cord into the base of the lathe have been included. A 5/8" dia. hole must be drilled in the rear of the base to accommodate the strain relief.

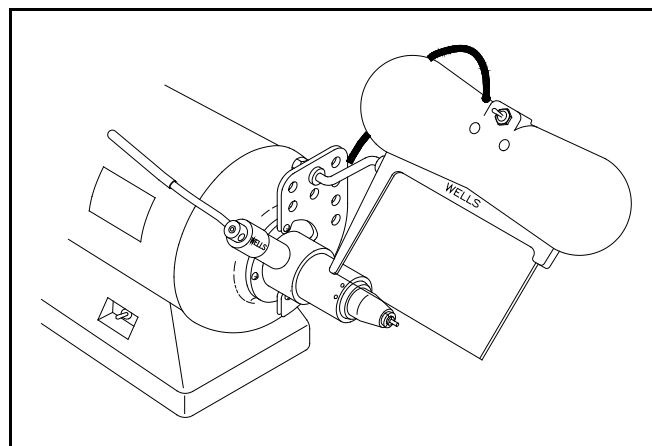


Figure 4.

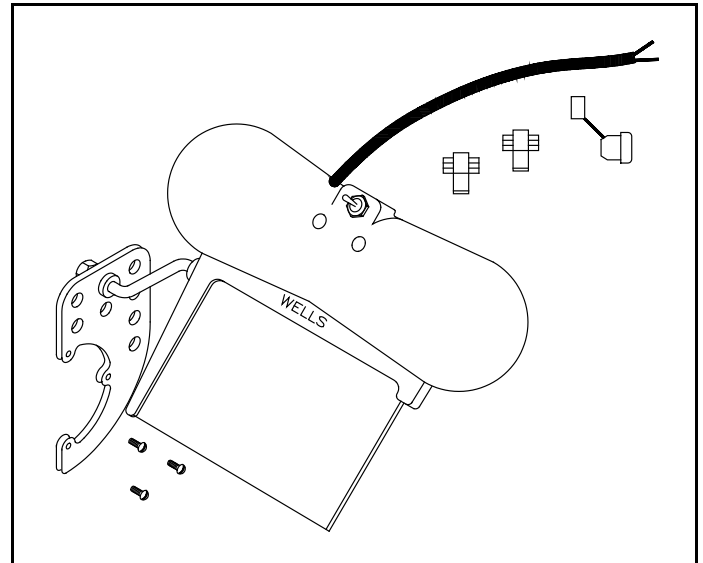


Figure 1.

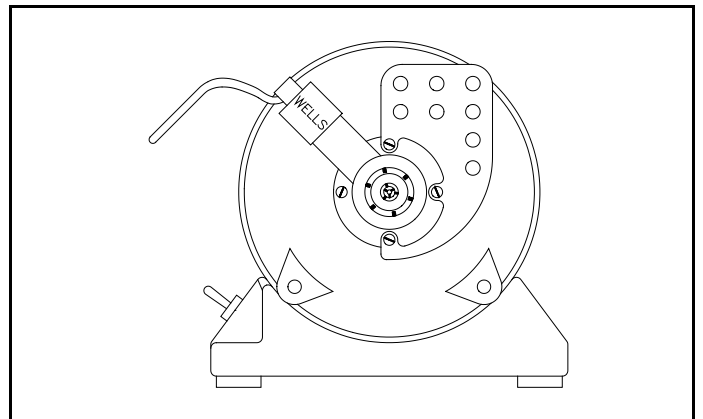
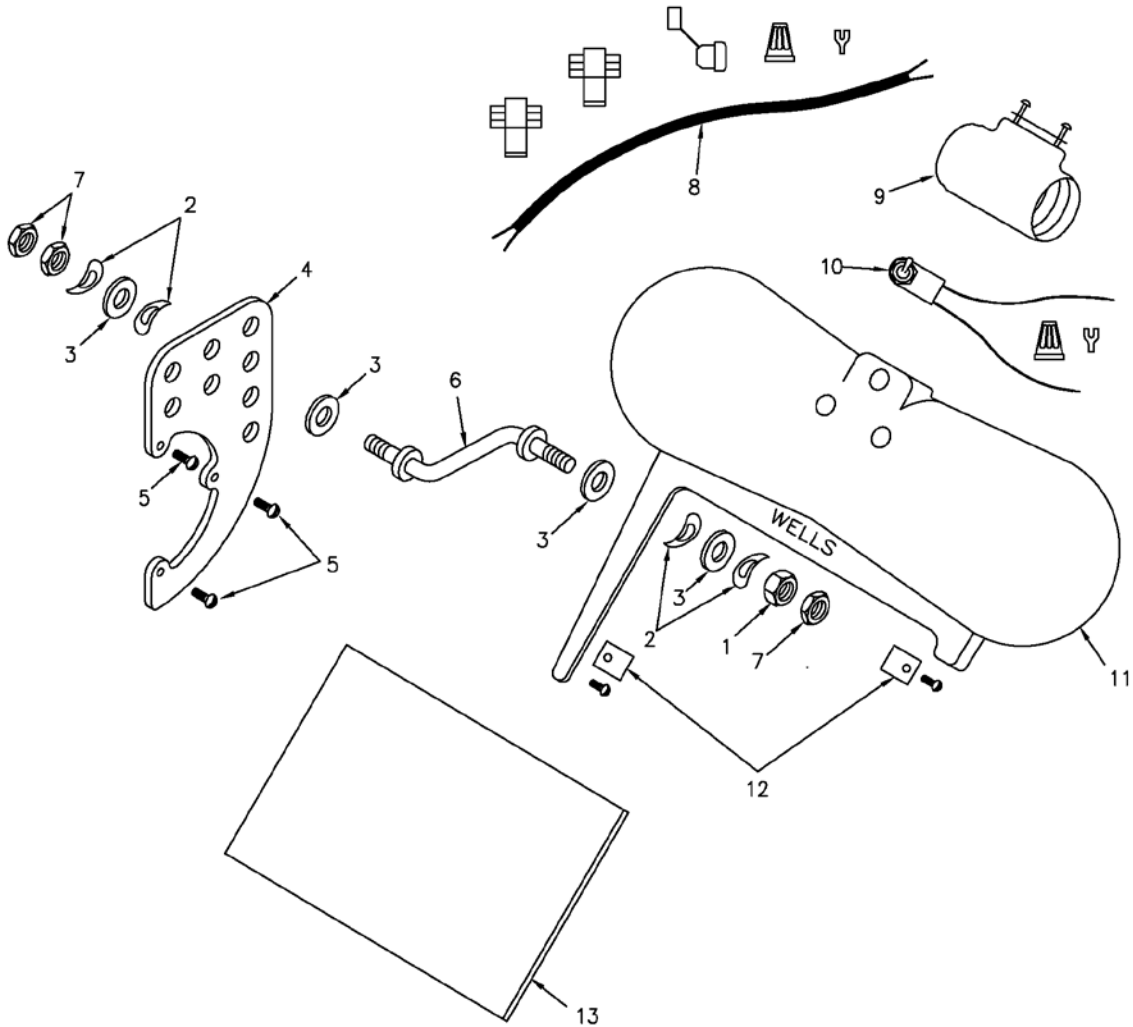


Figure 3.

- 3.2 If preferred, an electrical plug can be installed at the end of the cord.
- 3.3 Install two **ROUGH SERVICE** light bulbs, 60 watts each maximum. Ordinary bulbs do not withstand the vibration.
- 3.3 **CAUTION! The Light Shield becomes very hot while in use. Do not touch!**

See the reverse side of this bulletin for replacement parts.

If you have any questions or difficulties please call Wells Dental, Inc. at 1 800 233-0521.



REF.	PART NO.	DESCRIPTION
1	L524	NUT 5/16-24 THICK HEX
2	L540	BOW WASHER
3	513	FIBER WASHER 5/16
4	L506	BRACKET
5	546	SCREW 6-32 X 1/2 RHZC
6	L500	ARM - QUICK CHUCK COMPLETE
7	L526	NUT 5/16-24 THIN HEX
8	L106	LIGHT CORD KIT (with connectors)
9	L118	LIGHT SOCKET KIT (with screws)
10	L120	TOGGLE SWITCH KIT (with connectors)
11	L512	LIGHT SHIELD RH
12	L102	SHIELD CLIPS PKG-2 (with screws)
13	L110	GLASS SHIELD FOR WELLS
1,2,3,4, 5,6&7	L200	ARM KIT FOR QUICK CHUCK