

# WELLS

DENTAL, INC.

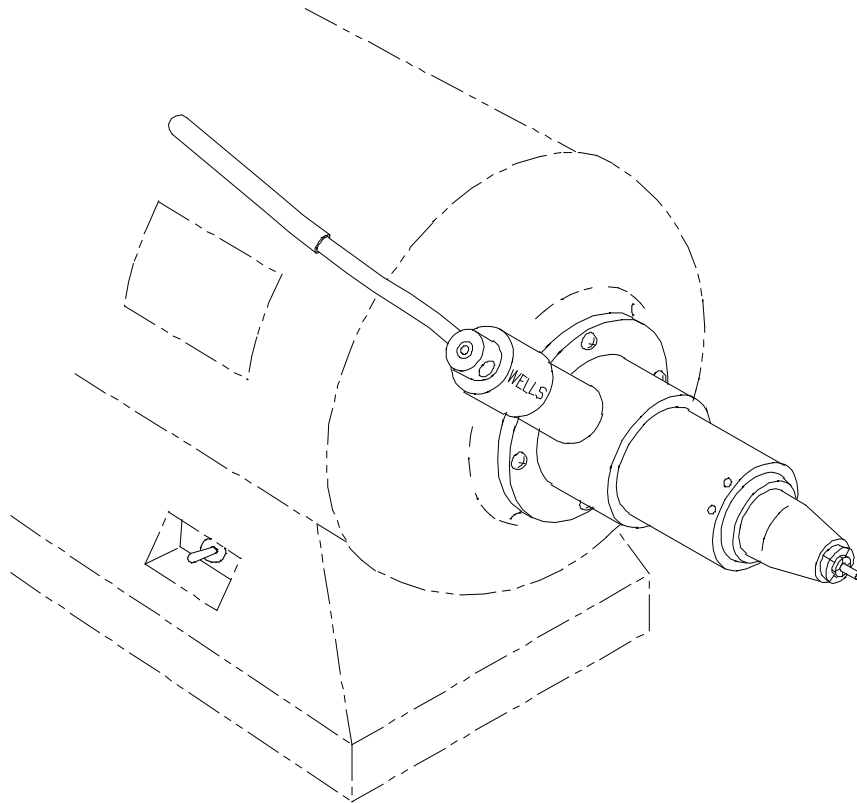
TECHNICAL BULLETIN  
Q826-022510

5860 FLYNN CREEK ROAD  
P.O. BOX 106  
COMPTCHE, CALIFORNIA, U.S.A. 95427  
www.wellsdental.com

**READ ALL INSTRUCTIONS  
BEFORE PROCEEDING  
SAVE THIS FOR FUTURE REFERENCE**

**THIS PRODUCT IS FOR PROFESSIONAL LABORATORY USE ONLY**

## USER'S MANUAL



**SUPER QUICK CHUCK RIGHT HAND  
Product No. Q015**

**SALES      CUSTOMER SERVICE      TECHNICAL ASSISTANCE  
CALL TOLL-FREE: 1 800 233-0521**

**PHONE: (707) 937-0521, FAX: (707) 937-2809  
MONDAY-FRIDAY, 8:00 a.m.-4:30 p.m. P.S.T.**

DENTAL EQUIPMENT FOR TECHNICIANS WHO VALUE TIME AND QUALITY

## 1.0 SAFETY INSTRUCTIONS



**WARNING: WHEN USING ELECTRIC TOOLS, BASIC SAFETY PRECAUTIONS SHOULD ALWAYS BE FOLLOWED TO REDUCE THE RISK OF FIRE, ELECTRIC SHOCK, AND PERSONAL INJURY INCLUDING THE FOLLOWING ITEMS:**



**1.1 GROUND THE LATHE.** The lathe must be grounded while in use to protect the user from electric shock. Plug into a three hole grounded receptacle. If an adapter is used to accommodate a two hole receptacle, the grounding lug must be connected to a known ground. Never remove the third prong. If in doubt, have a licensed electrician check the receptacle for **PROPER GROUNDING** and **POLARITY**.

**1.2 HANDLE WITH DRY HANDS.** Never handle the plug, power cord, lathe or Quick Chuck with wet hands.



**1.3 DISCONNECT THE POWER CORD.** Before servicing, unplug the power cord to prevent electric shock or unintentional starting.



**1.4 ALWAYS USE SAFETY GLASSES.** Wear industrial certified safety glasses for **ALL** work and maintenance.

**1.5 SECURE LOOSE ARTICLES.** Fasten long hair. Do not wear loose clothing, necktie or jewelry. They can get caught in rotating parts.



**1.6 USE PARTICLE MASK** when there is dust or particles in the air.

**1.7 ALWAYS KEEP A TOOL IN THE COLLET.** Never operate the unit without a tool.



**1.8 DO NOT EXCEED THE MAXIMUM OPERATING SPEED OF THE TOOL.** Use **ONLY** tools, parting disks or polishing wheels that are rated above the speed of your lathe. Insufficiently rated tools may break apart, bend or come loose causing serious personal injury.

**1.9 MAINTAIN THE WHEEL OR TOOL.** Never operate with a damaged or bent tool. It could break apart or come loose causing serious personal injury.

**1.10 CHECK TOOL IS SECURE.** Insert the tool shank into the collet to the **MAXIMUM** depth that will allow free rotation of the tool. An extended tool is likely to break or bend causing serious personal injury. Always check that the tool is securely held in the collet.



**1.11 KEEP CHILDREN AWAY.** All visitors should be kept a safe distance from the work area. Do not run the unit unattended.

**1.12 MAINTAIN THE UNIT.** Inspect periodically for damaged or worn parts. Follow the instructions for maintenance. Don't use if the power cord, motor, switch, or other parts are in poor condition. Don't use if the unit has been dropped, damaged, or exposed to water. Have a qualified service person inspect and replace parts when necessary.

**1.13 FOR LABORATORY USE ONLY.** The WELLS Super Quick Chuck is intended for use by trained professional laboratory personnel.

## 2.0 PRODUCT DESCRIPTION

The WELLS Super Quick Chuck is designed for heavy duty laboratory service, quiet operation, and low maintenance. Tool changes are quick and safe. A quarter turn of the handle disengages the clutch, stops the shaft and opens the collet all while the lathe is running. All 1/4" and 3/32" shank tools may be changed instantly without adapters.

**Q015 WELLS SUPER QUICK CHUCK RIGHT HAND with accessories** consists of:

SUPER QUICK CHUCK and Q203 ACCESSORY KIT with:

- Q126 ARBOR BAND 3/4"
- Q134 SPIRAL CHUCK
- Q142 STONE CHUCK (2)
- Q154 MANDREL (2)
- Q188 SET OF STOPS
- Q193 COLLET WRENCH
- Q194 TUBE BRUSH 3/8
- 151 HEX WRENCH 3/32
- Q169 INSTALLATION SCREWS (4)
- Q826 USER'S MANUAL

## 3.0 SPECIFICATIONS

COLLET SIZES	1/4" and 3/32"
TYPICAL OPERATING RPM.....	1725/3450 RPM
MAXIMUM LIMIT RPM.....	5000 RPM
UNIT DIMENSIONS (without lathe) .....	approx. 2.5 x 5 x 5"
WEIGHT (without lathe) .....	1.5 lbs
SHIPPING WEIGHT (without lathe) .....	3 lbs

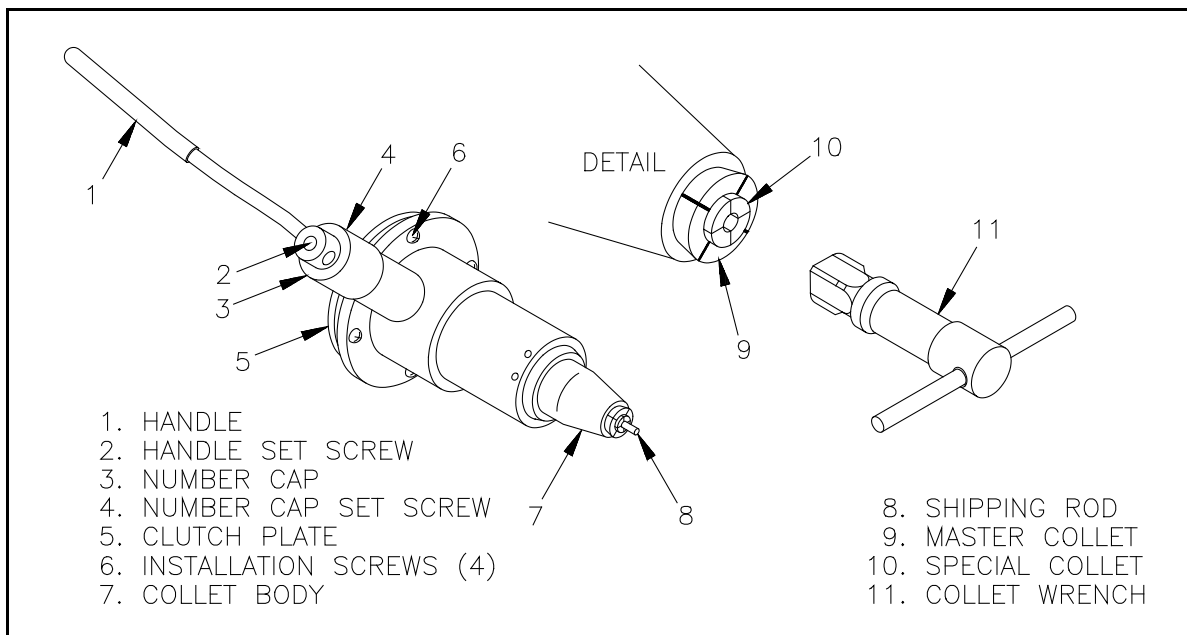


Figure 1. Quick Chuck features

## 4.0 INSTALLATION

The WELLS Super Quick Chuck fits universally on most dental lathes. Please refer to page 15 of this manual for adapter kits. Separate technical bulletins for installation on the particular lathe are available.

## 5.0 OPERATION



**WARNING:** READ ALL INSTRUCTIONS BEFORE OPERATING. FAILURE TO COMPLY WITH INSTRUCTIONS COULD RESULT IN SEVERE PERSONAL INJURY AND/OR PROPERTY DAMAGE.

**CAUTION:** Always keep a tool in the collet. The Quick Chuck may be damaged if the collet is closed without a tool.

**CAUTION:** Always ease the handle into position to close the collet. If the handle is allowed to snap up or is forced upward it may damage the Quick Chuck.

### 5.1 GENERAL OPERATION

- 5.1.1 Work is done with the handle in the operating position at approximately 9:30 o'clock. See Figure 2.
- 5.1.2 The clutch disengages when the handle is moved down to approximately 8:30 o'clock.
- 5.1.3 The brake is applied when the handle is moved to approximately 7:30 o'clock.
- 5.1.4 The collet opens when the handle is moved to 6:00 o'clock (straight down).

### 5.2 CHANGING A TOOL

Any 3/32" or 1/4" shanked tool such as a burr or chuck may be changed while the lathe is running.

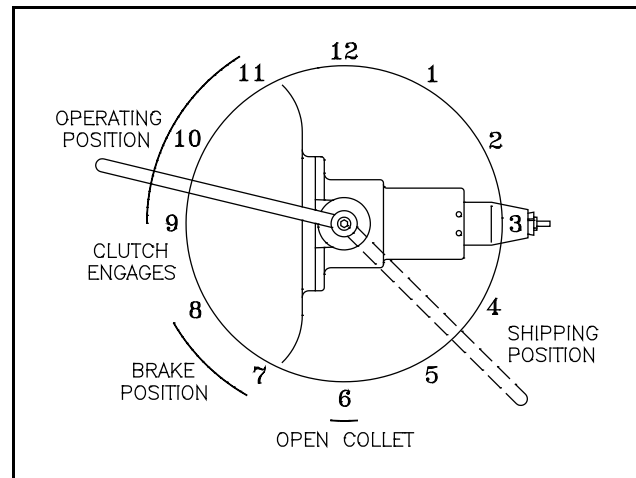


Figure 2.

- 5.2.1 From the operating position, move the handle to the open collet position (6:00 o'clock). See Figure 2.
- 5.2.2 Remove the tool. (A 1/4" shanked tool will pop out when the collet is opened.)
- 5.2.3 Insert the selected tool into the collet. (To insert a 1/4" shanked tool, push the special collet back inside the master collet with the shank of the tool.)
- 5.2.4 Move the handle to approximately 8:00 o'clock to close the collet.

- 5.2.5  **DANGER:** REMOVE YOUR HAND from the tool before moving the handle past 8:30 o'clock. Holding a tool when the clutch engages could cause serious personal injury.

- 5.2.6 Ease the handle upward to the operating position. Do not let the handle snap up.

### 5.3 CHANGING BUFFING WHEELS, ARBOR BANDS AND STONES

By applying the brake, buffing wheels, arbor bands and stones may be loosened or tightened while the lathe is running.

- 5.3.1 From the operating position move the handle down to about 7:30 o'clock where the resistance of the brake is felt. This disengages the clutch, locks the shaft and keeps the collet closed.
- 5.3.2 Hold the handle in this position to loosen or tighten buffing wheels, arbor bands or stones.

## 6.0 MAINTENANCE

**CAUTION:** The bearings in the WELLS Super Quick Chuck are permanently lubricated with special compounds. If anything enters the bearings, they will be damaged. **KEEP OIL, SOLVENT AND COMPRESSED AIR AWAY** from the WELLS Super Quick Chuck.



NO OIL



NO SOLVENT



NO AIR

**CAUTION:** There are no user serviceable parts inside the Quick Chuck except as described below. **DO NOT DISASSEMBLE** the Quick Chuck.

### 6.1 RUNNING HOT

A Quick Chuck may run hot for several reasons:

- 6.1.1 A new or rebuilt Quick Chuck will run hot when first put into operation until the bearings are broken in. This condition may last several days depending upon the amount of use.
- 6.1.2 The heat from the lathe motor is transferred to the Quick Chuck. The amount varies with the particular lathe.
- 6.1.3 A worn or loose collet or a stop that is too long may cause tools to slip. The brake may drag causing the collet to spin inside the collet body. The overheating will be noticed at the collet and front of the collet body. If the tools slips, follow the procedures in section 6.3, FITTING A STOP TO ADJUST THE COLLET DIAMETER.

### 6.2 CLEANING THE COLLETS (MONTHLY)

To prevent the collets from sticking and slipping, periodic cleaning and lubrication is essential.

- 6.2.1 Turn off the lathe and disconnect the power cord. Move the handle to the open collet position (6:00 o'clock). Remove the tool.
- 6.2.2 Insert the collet wrench into the master collet and turn counterclockwise to unscrew. If the collet turns but will not unscrew, see section 6.4, REMOVING A STUCK COLLET.
- 6.2.3 Remove the master collet and the special collet. The pop-out spring, stop, and stop lock screw will be attached to the special collet. It is not necessary to disassemble these parts.
- 6.2.4 Wash the collets in solvent. Solvent may be used on these parts **ONLY** when removed from the collet body. Dry the parts thoroughly.
- 6.2.5 Clean the inside of the collet body so the master collet will seat against the stop properly. Clean the threads using the tube brush provided in the accessory kit. Rotate the brush into the threads a few times. Use a pipe cleaner or Q-tip to clean out all the debris in the bottom of the hole. Do not use solvent here.
- 6.2.6 Put a **THIN** film of grease or Vaseline on the outside of both collets including the threads of the master collet. **DO NOT** use oil.
- 6.2.7 Insert the collets and tighten with the collet wrench.
- 6.2.8 The special collet should protrude about 1/8". If not, remove the collets and carefully stretch or compress the pop-out spring as needed.
- 6.2.9 Insert a tool into the collet and move the handle to the operating position.
- 6.2.10 Connect the power cord.

**CAUTION:** Do not run the Quick Chuck without the collets.

### 6.3 FITTING A STOP TO ADJUST THE COLLET DIAMETER

When the collets wear, tools may slip. The brake may drag causing the collet to spin inside the collet body. A shorter stop must be installed to compensate for the wear. The shorter stop will allow the master collet to thread further into the collet body so it grips more tightly. A set of 6 stops of different lengths (Q188) is included with the accessory kit.

- 6.3.1 Turn off the lathe and disconnect the power cord.
- 6.3.2 Move the handle to the open collet position (6:00 o'clock) and remove the tool.
- 6.3.3 Insert the collet wrench into the master collet and turn counterclockwise to unscrew. If the collet turns but will not unscrew, see section 6.4, REMOVING A STUCK COLLET.
- 6.3.4 Remove the master collet and the special collet. The pop-out spring, stop, and stop lock screw will be attached to the special collet. See Figure 4.

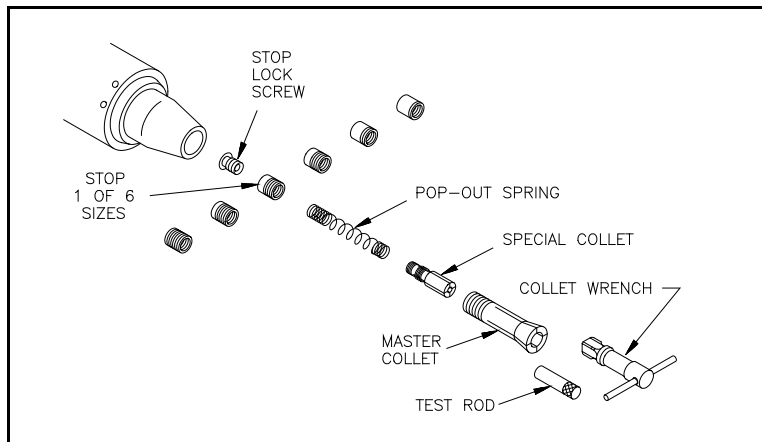


Figure 3.

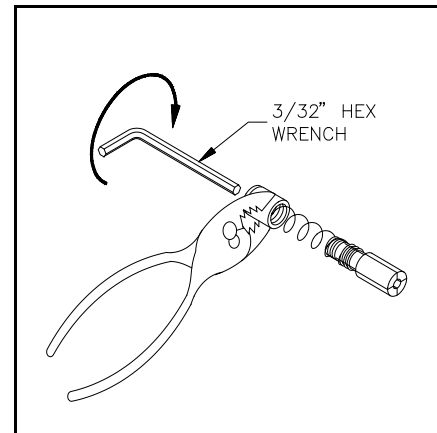


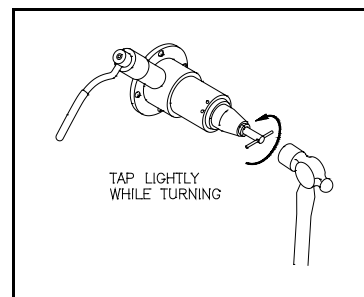
Figure 4.

- 6.3.5 Remove the stop lock screw by **LIGHTLY** grasping the stop with a pair of pliers. Insert the 3/32 hex wrench into the end of the stop lock screw and unscrew it.
- 6.3.6 Unscrew the stop to remove it from the pop-out spring. Set the stop aside.
- 6.3.7 Follow steps 6.2.4 and 6.2.5 for cleaning the collets.
- 6.3.8 Count the number of marks on the surface of the stop you set aside.
- 6.3.9 Choose a new stop with one mark less (the next shorter size).
- 6.3.10 Screw the new stop onto the pop-out spring.
- 6.3.11 Screw the stop lock screw into the stop. **LIGHTLY** grasp the stop with the pliers. Tighten the stop lock screw with the 3/32 hex wrench.
- 6.3.12 Put a **THIN** film of grease or Vaseline on the outside of both collets including the threads of the master collet.
- 6.3.13 Insert the collets and tighten with the collet wrench.
- 6.3.14 Make sure that the handle is in the open collet position (6:00 o'clock). Insert the test rod that comes with the set of stops (or a 1/4" tool shank) into the master collet. The test rod should just slip into the collet. If it is loose, start at step 6.3.2 and install a shorter stop. If the test rod will not fit into the master collet or is too tight, start at step 6.3.2 and install a longer stop. Install the shortest stop that will allow the test rod to just slip into the master collet.
- 6.3.15 The special collet should protrude about 1/8". If not, remove the collets and carefully stretch or compress the pop-out spring as needed.
- 6.3.16 Insert a tool into the collet and move the handle to the operating position.
- 6.3.17 Connect the power cord.
- 6.3.18 If tools still slip or the collet overheats, both collets should be replaced (Q146 MASTER COLLET and Q148 SPECIAL COLLET WITH SPRING). Follow the procedure above, section 6.3, when installing new collets. The set of stops (Q188) included with the accessory kit will be needed.

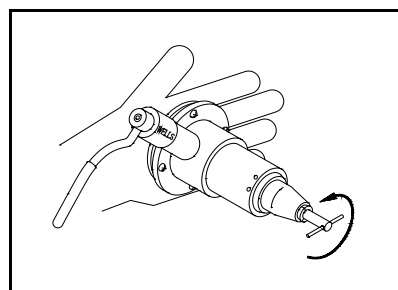
**6.4 REMOVING A STUCK COLLET**

If the Quick Chuck is run without a tool in the collet or the collet is not cleaned and lubricated periodically it may get stuck in the Quick Chuck shaft. The collet may turn but not unscrew.

- 6.4.1 Turn off the lathe and disconnect the power cord.
- 6.4.2 Move the handle to the open collet position (6:00 o'clock). Remove the tool.
- 6.4.3 Insert the collet wrench. Tap the end of the collet wrench **LIGHTLY** while turning the collet wrench counterclockwise. See Figure 5. If this does not release the collet, continue with the next step.



**Figure 5.**



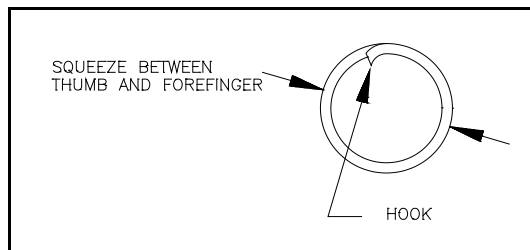
**Figure 6.**

- 6.4.4 Check that the handle is in the open collet position. Remove the four installation screws and remove the Quick Chuck.
- 6.4.5 Hold the steel clutch plate to keep it from turning while you remove the collet. See Figure 6.
- 6.4.6 Install the Quick Chuck on the lathe using the four installation screws.

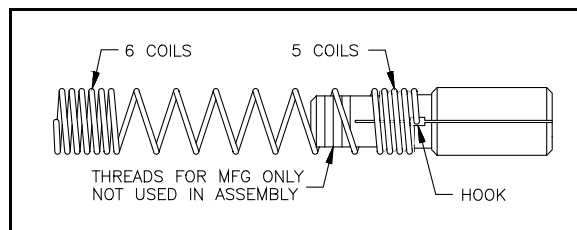
**6.5 REPLACING THE POP-OUT SPRING**

If the pop-out spring has been damaged or the special collet falls out, the pop-out spring needs to be replaced. Product No. Q186 POP-OUT SPRING (PKG-2) may be ordered for replacement.

- 6.5.1 Turn off the lathe and disconnect the power cord.
- 6.5.2 Follow steps 6.3.2 through 6.3.6 to remove and disassemble the collet.
- 6.5.3 Remove the old pop-out spring from the special collet.
- 6.5.4 Follow steps 6.2.4 and 6.2.5 for cleaning the collets and collet body.
- 6.5.5 Examine each end of the new pop-out spring carefully. One end has about five closely spaced coils while the other has about six. The end with five coils also has a tiny hook at the end of the wire. See Figure 7. When properly installed, this hook locks the spring onto the collet.
- 6.5.6 Hold the five closely spaced coils (with the hook) and start threading the coil onto the special collet. When the hook reaches a slot it will tend to get caught. Squeeze the coils just behind the hook. See Figure 7. Ease the hook past each slot.
- 6.5.7 Continue threading the hook onto the collet until it lodges into the center of the widened area of one of the slots. See Figure 8.



**Figure 7.**



**Figure 8.**

- 6.5.8 Screw the stop you set aside onto the pop-out spring.
- 6.5.9 Follow steps 6.3.11 through 6.3.16 for fitting a stop.

## 6.6 ADJUSTING THE CLUTCH SPRING

If the handle does not have enough spring tension when the handle is in the operating position, the clutch may slip.

6.6.1 Move the handle to the operating position (9:30 o'clock).

6.6.2 **CAUTION:** The number cap is under spring tension and will twist when loosened. Carefully loosen the set screw in the side of the number cap.

6.6.3 Turn the number cap counterclockwise against the spring tension until the set screw is facing straight up (12:00 o'clock). Be sure the handle is still in the operating position (9:30 o'clock). Tighten the set screw. See Figure 9. If there is no spring tension, the spring is damaged; go to section 6.7, REPLACING THE CLUTCH SPRING.

6.6.4 If the clutch still slips, loosen the set screw and turn the number cap a little more in the counterclockwise direction to increase the spring tension. Tighten the set screw.

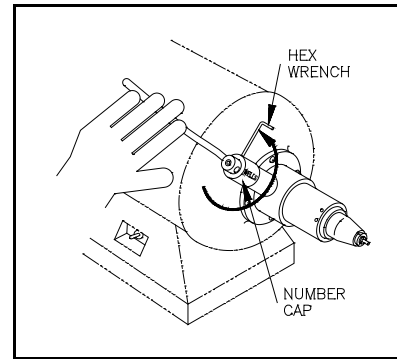


Figure 9.

## 6.7 REPLACING THE CLUTCH SPRING

If there is no spring tension when attempting to adjust the clutch spring, it is damaged and must be replaced. Order part number Q184 CLUTCH SPRING RH.

6.7.1 Move the handle to the operating position (9:30 o'clock).

6.7.2 Loosen the handle set screw and remove the handle.

6.7.3 Loosen the set screw in the side of the number cap, lift off the number cap, remove and discard the damaged clutch spring.

6.7.4 Insert the short end of the new spring into the small hole inside the number cap.

6.7.5 Holding the spring in place with the tip of your finger (or pair of needle nose pliers), turn the number cap over and carefully insert the long end of the spring into the small hole in the Quick Chuck housing. Be sure the short end of the spring is still in the hole in the number cap. The number cap should drop into place so the handle fits through its hole. If the number cap has to be pushed down, the spring is not installed correctly.

6.7.6 Install the handle and tighten the handle set screw.

6.7.7 Turn the number cap counterclockwise against the spring tension until the number cap set screw is facing straight up (12:00 o'clock). Be sure the handle is still in the operating position (9:30 o'clock). Tighten the number cap set screw. See Figure 9.

## 6.8 FIXING A SQUEAKY CLUTCH

Over a period of time, the clutch may glaze and develop a squeak especially when the lathe is coasting to a stop.

6.8.1 Turn off the lathe and disconnect the power cord.

6.8.2 Move the handle to the shipping position (4:30 o'clock).

6.8.3 Remove the four installation screws and remove the Quick Chuck.

6.8.4 Lightly sand both the fiber and the steel clutch surfaces to remove the glaze.

6.8.5 Install the Quick Chuck on the lathe using the four installation screws and connect the power cord.

6.8.6 If the squeak persists and there is excessive dust around the clutch area, the adapter is misaligned. Refer to the technical bulletin for the installation of the Quick Chuck on your model lathe. Some lathes are improperly machined for correct adapter alignment. These lathes should be shipped to Wells Dental, Inc. for Quick Chuck installation.



## 6.9 REPLACING THE CLUTCH LINING

If the handle moves past 10:30 o'clock when in the operating position, or if the clutch continues to slip after adjusting the clutch spring, the clutch lining should be replaced. Product No. Q150 CLUTCH LINING WITH SCREWS may be ordered for replacement.

- 6.9.1 Turn off the lathe and disconnect the power cord.
- 6.9.2 Insert a 3/32" shipping rod or burr into the collet and move the handle to the shipping position (4:30 o'clock). See Figure 2.
- 6.9.3 Remove the four installation screws and remove the Quick Chuck.
- 6.9.4 Remove the three screws that hold the clutch lining and pry out the old clutch lining with a screw driver. Take care not to gouge the clutch hub.
- 6.9.5 Clean the clutch hub and surrounding area with a small brush or shop towel.
- 6.9.6 Before handling the new clutch lining, wash your hands to make sure they are not oily or greasy.
- 6.9.7 Place the new clutch lining on the hub and align the holes for the screws. If the holes do not line up, rotate the clutch lining to the next set of holes.
- 6.9.8 Start the new screws and tighten in an alternating sequence.
- 6.9.9 Wipe the clutch lining with a cloth soaked with clean solvent if it becomes darkened with any oil.
- 6.9.10 Lightly sand the steel clutch surface of the Quick Chuck with emory cloth to remove the glaze.
- 6.9.11 Install the Quick Chuck on the lathe using the four installation screws.

**CAUTION:** The position of the clutch hub on the shaft is critical for proper operation of the Quick Chuck. If it becomes necessary to remove or replace the clutch hub, refer to the technical bulletin for the installation of the Quick Chuck on your model lathe. **DO NOT REMOVE** the clutch hub unless you have this bulletin.

## 6.10 INSTALLING THE COLLET SHIELD (ACCESSORY)

The non-rotating collet shield covers the collet to provide a steady rest for more comfortable operation of your WELLS Super Quick Chuck. It also helps protect rubber gloves. Removal is easy for cleaning around the collet. Q104 COLLET SHIELD RH (right hand) fits model Q015 WELLS SUPER QUICK CHUCK (right hand with knurled dust cover **ONLY**) . See figure 10. If there is no knurled dust cover, the collet shield cannot be installed.

- 6.10.1 Remove the knurled dust cover by rotating **CLOCKWISE**. See Figure 10. It has **left-hand threads**.
- 6.10.2 Clean around the collet, collet body and threads with a small brush or rag. See Figure 11. Do not use solvent on the collets unless they are removed. Refer to section 6.2, **CLEANING THE COLLETS**.
- 6.10.3 Screw the collet shield onto the threads rotating **COUNTERCLOCKWISE**. See Figure 12. Tighten firmly by hand.

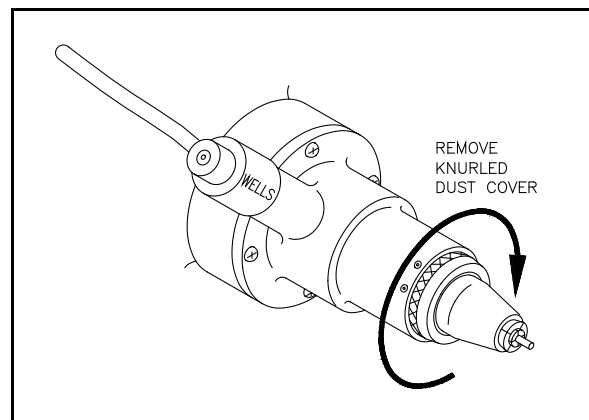


Figure 10.

### 6.11 CLEANING THE COLLET SHIELD

Accumulated material should be removed periodically.

- 6.11.1 Unscrew the collet shield by turning **CLOCKWISE**. Be sure to rotate in the correct direction. It has **left-hand threads**.
- 6.11.2 Clean around the collet, collet body and threads with a small brush or rag. See Figure 11. Do not use solvent on the collets unless they are removed. Refer to section 6.2, CLEANING THE COLLETS. Use solvent to clean the collet shield when it is removed.
- 6.11.3 Screw the collet shield onto the threads by rotating **COUNTERCLOCKWISE**. See Figure 12. Tighten firmly by hand.

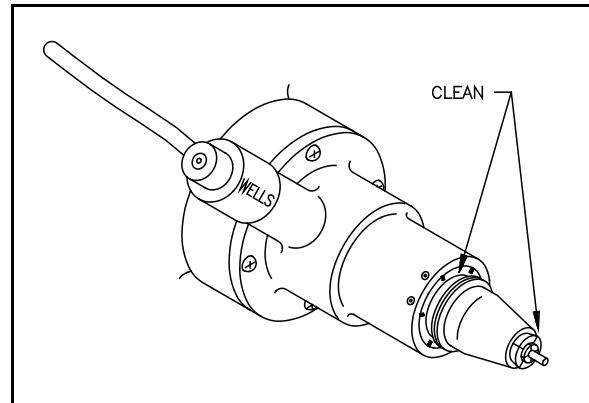


Figure 11.

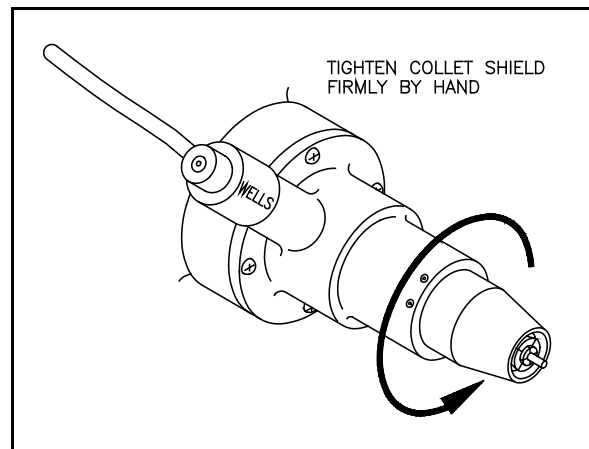


Figure 12.

For further maintenance or repairs, send Quick Chuck to WELLS DENTAL, INC. for factory service.

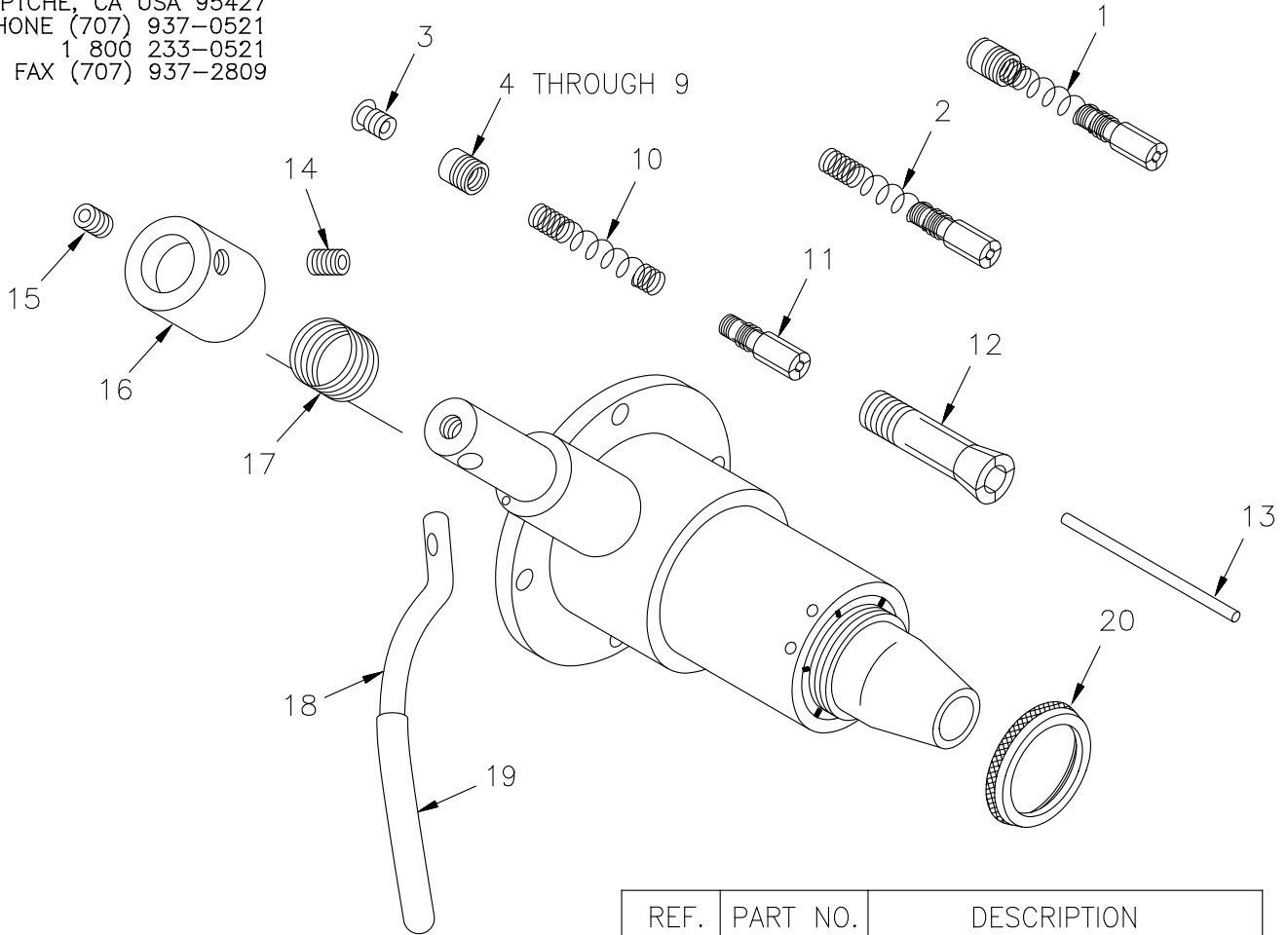
### 6.12 REMOVING THE QUICK CHUCK FROM THE LATHE

- 6.12.1 Insert a 3/32" shipping rod or burr into the collet and move the handle to the shipping position (4:30 o'clock). See Figure 2.
- 6.12.2 Remove the four installation screws and remove the Quick Chuck.

# WELLS

DENTAL, INC.  
 5860 FLYNN CREEK ROAD  
 P.O. BOX 106  
 COMPTCHE, CA USA 95427  
 PHONE (707) 937-0521  
 1 800 233-0521  
 FAX (707) 937-2809

## PARTS LIST for SUPER QUICK CHUCK RH Product No. Q015



REF.	PART NO.	DESCRIPTION
1	Q240	SPECIAL COLLET COMPLETE
2	Q148	SPECIAL COLLET WITH SPRING
3	Q174	STOP LOCK SCREWS PKG-2
4	Q578	STOP .265 BLUE 1 MARK
5	Q579	STOP .275 YELLOW 2 MARKS
6	Q580	STOP .285 ORANGE 3 MARKS
7	Q581	STOP .295 RED 4 MARKS
8	Q582	STOP .305 GREEN 5 MARKS
9	Q583	STOP .315 METAL 6 MARKS
3-9	Q188	STOPS - SET OF 6
10	Q186	POP-OUT SPRING PKG-2
11	Q149	SPECIAL COLLET
12	Q146	MASTER COLLET
13	Q542	SHIPPING ROD 3/32 X 2-1/8
14	511	SCREW, SET 10-32 X 1/4
15	536	SCREW, SET 10-32 X 3/16
16	Q521	NUMBER CAP RH
17	Q184	CLUTCH SPRING RH
18	Q527	HANDLE
19	Q600	GRIP 3"
15,18,19	Q250	HANDLE WITH SET SCREW
20	Q605	DUST COVER RH

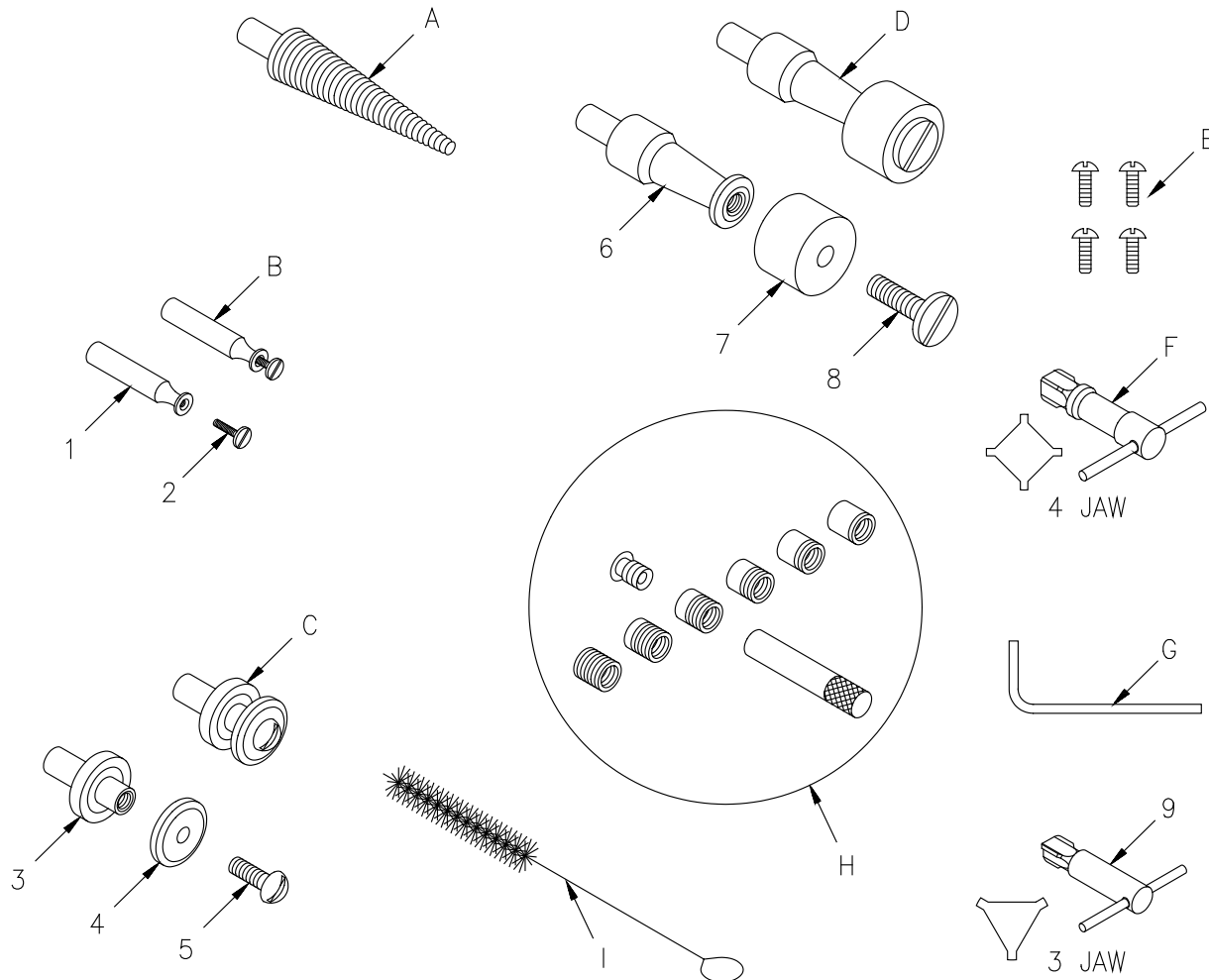
# WELLS

DENTAL, INC.

5860 FLYNN CREEK ROAD  
 P.O. BOX 106  
 COMPTCHE, CA USA 95427  
 PHONE (707) 937-0521  
 1 800 233-0521  
 FAX (707) 937-2809

## ACCESSORY KIT RH

Product No. Q203



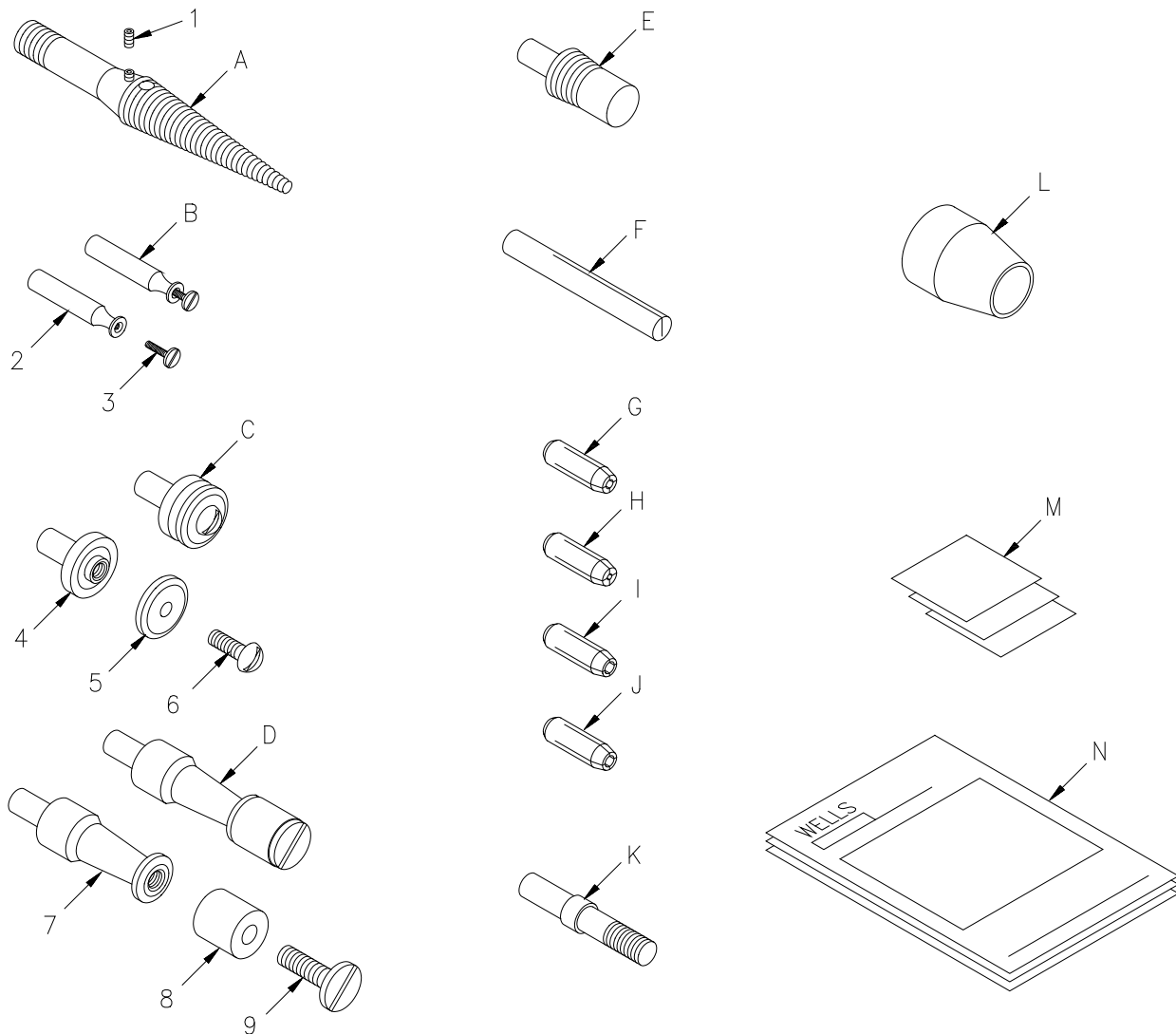
Q203 ACCESSORY KIT RIGHT HAND			
REF.	PART NO.	DESCRIPTION	QTY
A	Q134	SPIRAL CHUCK RIGHT HAND	1
B	Q154	MANDREL WITH 1-64 SCREW RH	2
C	Q142	STONE CHUCK TOOTH & KNIFE RH	2
D	Q126	ARBOR BAND CHUCK 3/4 RH	1
E	Q169	INSTALLATION SCREWS PKG-4	1
F	Q193	COLLET WRENCH 4 JAW	1
G	151	HEX WRENCH 3/32	1
H	Q188	STOPS - SET OF 6 (with STOP LOCK SCREW & TEST ROD)	1
I	Q194	TUBE BRUSH 3/8	1

INDIVIDUAL PARTS		
REF.	PART NO.	DESCRIPTION
1	Q537	MANDREL 1-64 RH
2	Q166	SCREW FOR MANDREL 1-64 RH PKG-3
3	Q525	STONE CHUCK TOOTH & KNIFE RH
4	Q589	STONE CHUCK WASHER
5	Q171	SCREW 8-32 X 1/2 RHSS
6	Q513	ARBOR BAND BODY RH
7	Q116	ARBOR BAND RUBBER 3/4
8	Q162	SCREW FOR ARBOR BAND RH
9	Q192	COLLET WRENCH 3 JAW

# WELLS

DENTAL, INC.  
 5860 FLYNN CREEK ROAD  
 P.O. BOX 106  
 COMPTCHE, CA USA 95427  
 PHONE (707) 937-0521  
 1 800 233-0521  
 FAX (707) 937-2809

## ADDITIONAL ACCESSORIES for SUPER QUICK CHUCK RH



ADDITIONAL ACCESSORIES		
REF.	PART NO.	DESCRIPTION
A	Q180	SPIRAL SEMI-PERMANENT RH
B	Q158	MANDREL WITH 2-64 SCREW RH
C	Q138	STONE CHUCK THIN ECONO RH
D	Q122	ARBOR BAND CHUCK 1/2 RH
E	Q128	FIELD SANDPAPER CHUCK RH
F	Q130	SANDPAPER CHUCK
G	Q108	BURR ADAPTER 3/32 (STANDARD)
H	Q106	BURR ADAPTER 1/16
I	Q110	BURR ADAPTER 1/8
J	Q112	BURR ADAPTER 3MM
K	Q118	ARBOR-YATES BURR
L	Q104	COLLET SHIELD RH
M	Q144	EMERY CLOTH 1"x1" PKG-3
N	Q826	USER'S MANUAL QUICK CHUCK RH

INDIVIDUAL PARTS		
REF.	PART NO.	DESCRIPTION
1	562	SCREW SET 4-40 X 3/16
2	Q539	MANDREL 2-64 RH
3	Q168	SCREW FOR MANDREL 2-64 RH PKG-3
4	Q523	STONE CHUCK THIN ECONO RH
5	Q589	STONE CHUCK WASHER
6	Q171	SCREW 8-32 X 1/2 RHSS
7	Q513	ARBOR BAND BODY RH
8	Q114	ARBOR BAND RUBBER 1/2
9	Q162	ARBOR BAND SCREW RH
		ACCESSORIES AND PARTS FOR LEFT HAND QUICK CHUCKS ARE ALSO AVAILABLE

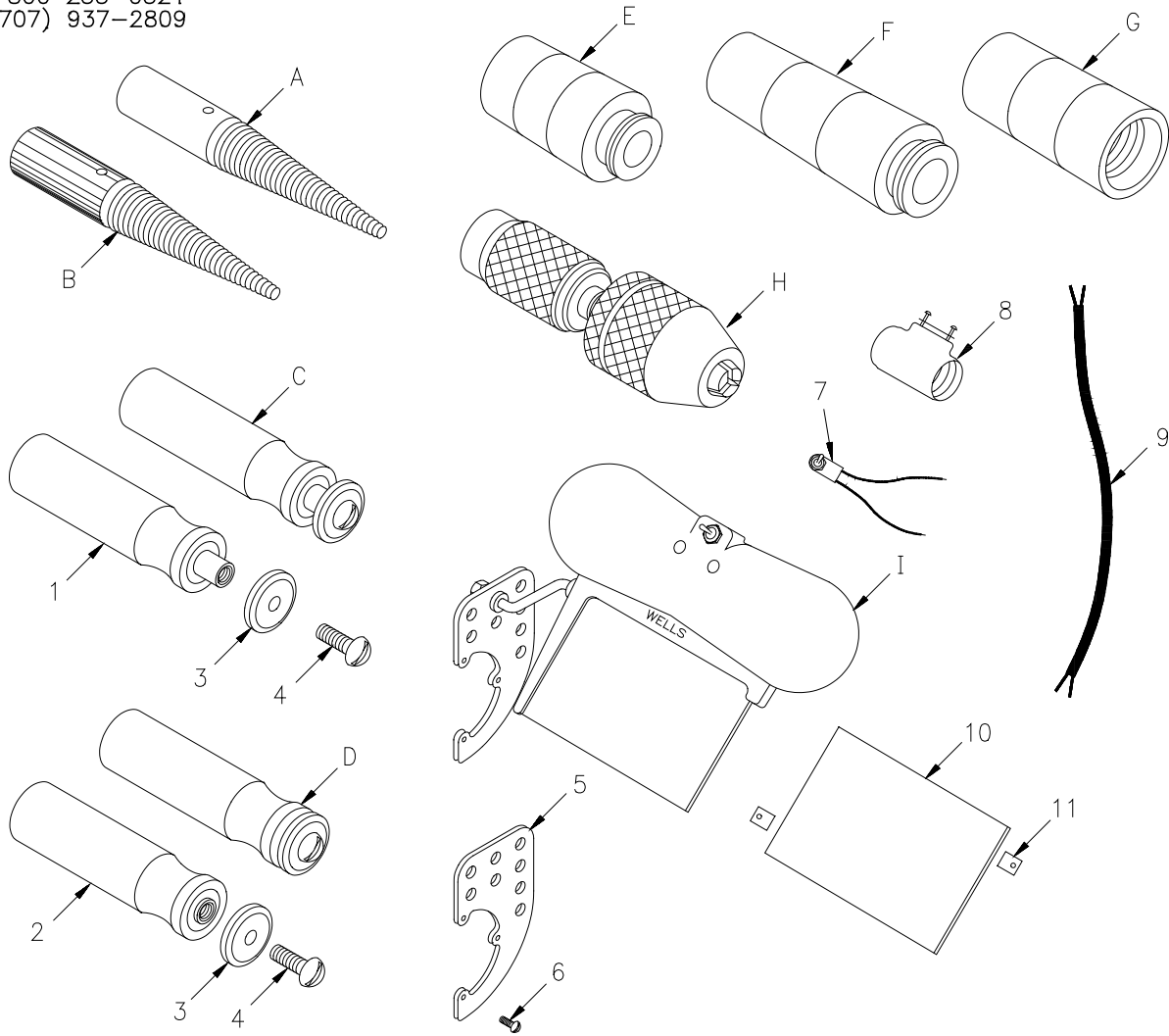
# WELLS

DENTAL, INC.

5860 FLYNN CREEK ROAD  
 P.O. BOX 106  
 COMPTCHE, CA USA 95427  
 PHONE (707) 937-0521  
 1 800 233-0521  
 FAX (707) 937-2809

## LATHE ACCESSORIES

The SHAFT GUARDS below satisfy OSHA regulations for guarding projecting shaft ends.



LATHE ACCESSORIES		
REF.	PART NO.	DESCRIPTION
A	R136	SPIRAL TAPER SHAFT LH
	R137	SPIRAL TAPER SHAFT RH
B	R138	SPIRAL BRASS TAPER SHAFT LH
	R139	SPIRAL BRASS TAPER SHAFT RH
C	R132	STONE CHUCK TAPER SHAFT LH
	R133	STONE CHUCK TAPER SHAFT RH
D	R134	THIN ECONO TAPER SHAFT LH
	R135	THIN ECONO TAPER SHAFT RH
E	R141	SHAFT GUARD LH /WELLS/B (Baldor)
	R142	SHAFT GUARD RH /WELLS/B
F	R143	SHAFT GUARD LH /RW#2 (Red Wing)
	R144	SHAFT GUARD RH /RW#2
G	R145	SHAFT GUARD LH /RW#1
	R146	SHAFT GUARD RH /RW#1
H	R131	3 JAW CHUCK RH
I	L013	LIGHT SHIELD FOR QUICK CHUCK RH
	L014	LIGHT SHIELD FOR QUICK CHUCK LH

INDIVIDUAL PARTS		
REF.	PART NO.	DESCRIPTION
1	R532	STONE CHUCK TAPER SHAFT LH
	R533	STONE CHUCK TAPER SHAFT RH
2	R534	THIN ECONO TAPER SHAFT LH
	R535	THIN ECONO TAPER SHAFT RH
3	Q589	STONE CHUCK WASHER
4	Q170	SCREW 8-32 X 1/2 RHSS LEFTHAND
	Q171	SCREW 8-32 X 1/2 RHSS
5	L506	BRACKET (for Light Shield)
6	546	SCREW 6-32 X 1/2 RHZC (for Bracket)
7	L120	TOGGLE SWITCH KIT (with connectors)
8	L118	LIGHT SOCKET KIT (with screws)
9	L106	LIGHT CORD KIT (with connectors)
10	L110	GLASS SHIELD FOR WELLS
11	L102	SHIELD CLIPS PKG-2 (with screws)

LH=Left Hand RH=Right Hand

# WELLS

DENTAL, INC.  
 5860 FLYNN CREEK ROAD  
 P.O. BOX 106  
 COMPTCHE, CA USA 95427  
 PHONE (707) 937-0521  
 1 800 233-0521  
 FAX (707) 937-2809

## ADAPTER KITS and CLUTCHES for SUPER QUICK CHUCK

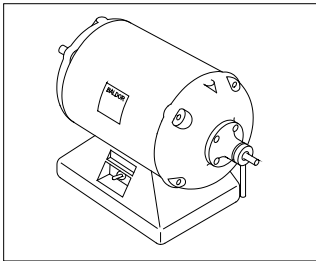
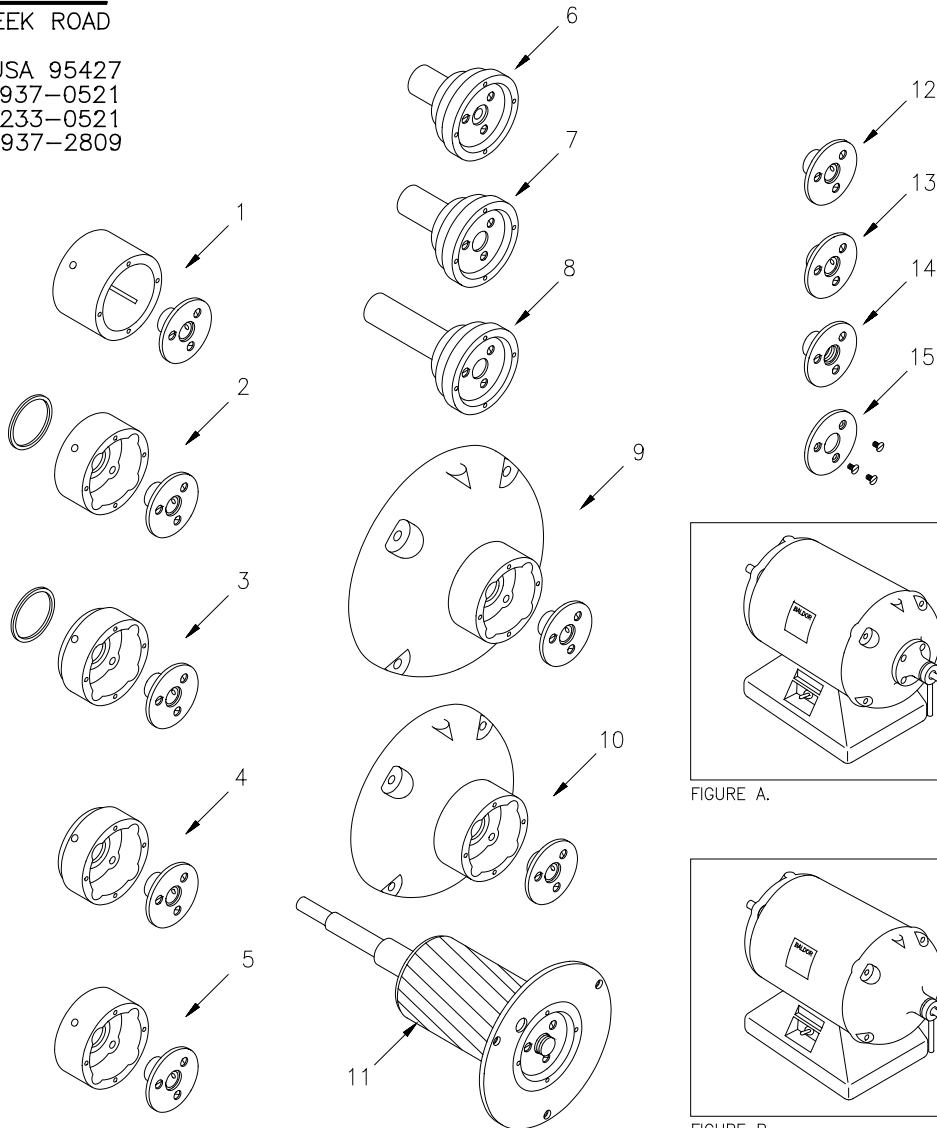


FIGURE A.

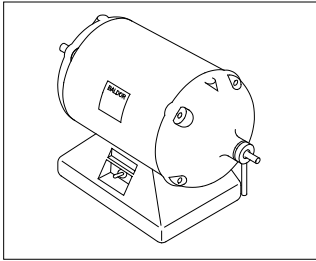


FIGURE B.

To order, please have the lathe manufacturer's name, model no., catalog no., serial no. and spec. no. from the lathe name plate.

REF.	PART NO.	DESCRIPTION	FITS THESE LATHES For other lathes, call Wells Dental, Inc.
1	Q206	ADAPTER RED WING	All Red Wing lathes
2	Q209	ADAPTER BALDOR 210/211	Baldor 210 and 211
3	Q212	ADAPTER BALDOR 221/240 35MM	Baldor 221 and 240 with 35mm bearing
4	Q215	ADAPTER BALDOR 221/240 40MM	Baldor 221 and 240 with 40mm bearing
5	Q218	ADAPTER BALDOR 300 SERIES	Baldor 350, 353, 357, 359, 370, 380 and 350T & 353T if it has the end plate illustrated in Figure A.
6	Q223	ADAPTER ROBBIN & MYERS	Robbin & Myers
7	Q226	ADAPTER RITTER A	Ritter model A
8	Q229	ADAPTER RITTER C	Ritter model C
9	Q237	ADAPTER BALDOR END PLATE	Baldor 357T, 359T, 380T, WELLS R051, R052, R053 and 350T & 353T if it has the end plate illustrated in Figure B.
10	Q239	ADAPTER BALDOR 340 END PLATE	Baldor 340
11	Q220	ADAPTER NOBIL/NEVIN/GMBRINI /X WITH ARMATURE EXCHANGE	Nobilium, Nevin, Gamberini 2 station, tabletop polishing lathe Your armature must be sent to Wells Dental, Inc.
11	Q221	ADAPTER NOB/NEVIN/GMBRINI NO X NO ARMATURE EXCHANGE	Nobilium, Nevin, Gamberini 2 station, tabletop polishing lathe
12	Q246	CLUTCH BALDOR/REDWING COMPLETE	All Red Wing, WELLS R051, R052, R053 and most Baldor lathes
13	Q247	CLUTCH BALDOR 340 COMPLETE	WELLS R060, Baldor 340
14	Q243	CLUTCH WELLS THREADED COMPLETE	WELLS R055, R056, R057 and R058 lathes, Baldor 380WCT
15	Q150	CLUTCH LINING WITH SCREWS	Nobilium, Nevin, Gamberini 2 station, tabletop polishing lathe All lathes

**NOTES**